

Appendix H



Public Workshop – March 16, 2011

You're invited to a community workshop...

Help us prepare the East Stanislaus Integrated Regional Water Management Plan!

Working together to manage surface and groundwater resources

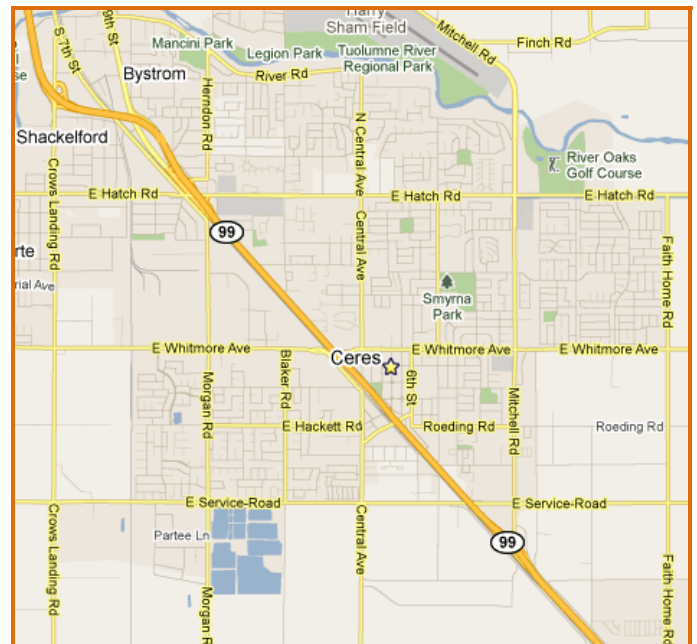


- Learn about Integrated Regional Water Management Planning;
- Hear a presentation on the process for preparing the plan;
- Explore possible regional visions, goals and objectives;
- Learn how you can participate.

Snacks and Beverages will be provided!

WHEN: Wednesday, March 16 – 5:30 p.m.

WHERE: Ceres Community Center
2701 4th Street, Ceres



**For more information on the workshop,
contact:**

Jim Alves
Associate Civil Engineer
City of Modesto
(209) 571-5557 or jalves@modestogov.com

This meeting is sponsored by:

ESRWMC

**EAST STANISLAUS REGIONAL
WATER MANAGEMENT GROUP**

Uste esta invitado a un taller para la comunidad ...

Ayudenos a preparar el plan de Administración Integral del agua regional del este del condado de Stanislaus!

Trabajemos juntos para administrar los recursos locales del agua de superficie y agua subterránea

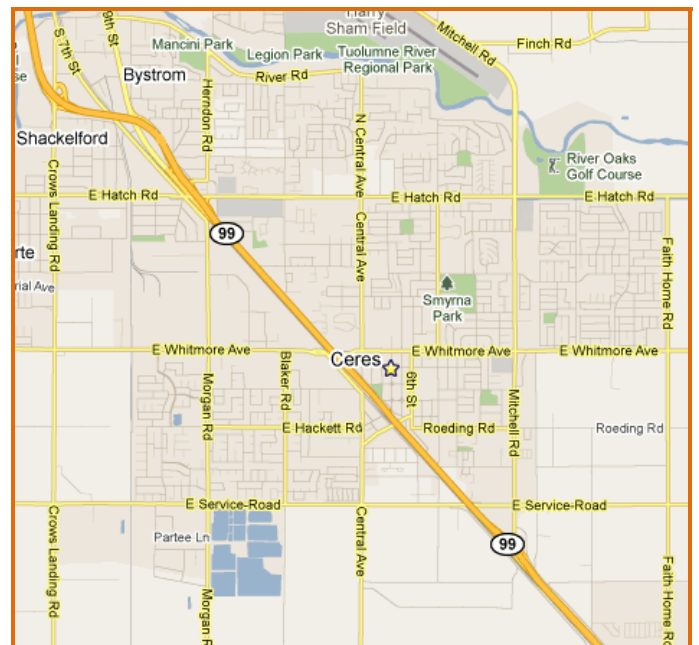


- Aprenda lo relacionado con el planeamiento de la administración integral del agua regional;
- Escucharemos una presentación acerca del proceso de la preparación del plan;
- Examinaremos posibles visiones regionales, metas y objetivos;
- Aprenda como usted puede participar.

Habrá refrescos y antojitos!

FECHA: El miércoles 16 de marzo del 2011 a las 5:30 de la tarde

LUGAR: El centro de la comunidad de la ciudad de Ceres. 2701 4th Street, Ceres



Para más información sobre el taller favor de ponerse en contacto con:

Jim Alves

Ingeniero Civil Asociado
de la ciudad de Modesto
tel. (209) 571-5557 or correo electronic
jalves@modestogov.com

Esta junta es patrocinada por:

ESRWMG (Por sus siglas en inglés)

**EAST STANISLAUS REGIONAL
WATER MANAGEMENT GROUP**

East Stanislaus Integrated Regional Water Management Plan



January 26, 2011

*Innovative Solutions for
Water and the Environment*

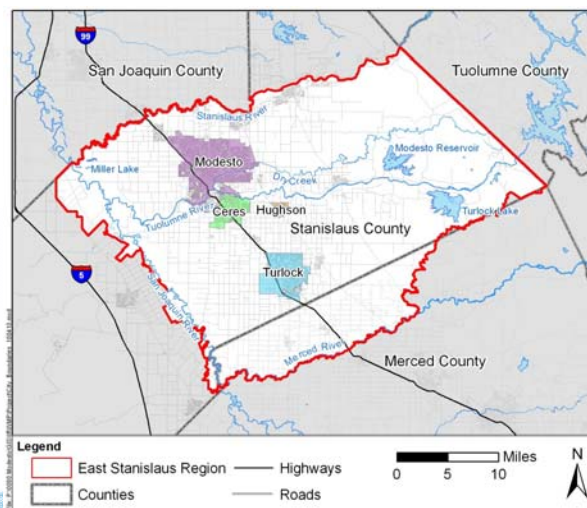
Meeting Agenda

- Introductions
- Summary of Integrated Regional Water Management Program
- East Stanislaus Region
- East Stanislaus IRWM Planning Process
- Governance and Public Involvement
- Next Steps



Introductions

- City of Modesto
- City of Hughson
- City of Ceres
- City of Turlock

**RMC**

Meeting Agenda

- Introductions
- **Summary of Integrated Regional Water Management Program**
- East Stanislaus Region
- East Stanislaus IRWM Planning Process
- Governance and Public Involvement
- Next Steps

RMC

An Integrated Regional Water Management (IRWM) Plan is...

- A planning document
- A description of water-related resources, challenges, goals, and solutions
- An opportunity for regional partnerships and coordination
- Facilitating to State funding

RMC

An IRWM Plan is not...

- A substitute for local planning
- A decrease in agency responsibilities or autonomy
- A policy document
- Comprehensive project documentation

RMC

The Purpose of an IRWM Plan is to...

- Develop regional understanding
- Identify water resources solutions
- Reflect the regional needs
- Maximize benefits through integration of water management strategies
- Leverage regional resources through partnerships
- Be eligible for State funding through the IRWM grant program



RMC

Contributors Include...

- Water and Wastewater Agencies
- Counties
- Cities
- Public Groups
- Private Organizations
- Members of the Public



RMC

An IRWM Plan and Process Helps by...

- Consolidating information
- Encouraging discussion among stakeholders
- Evaluating projects on a regional scale
- Increasing chances of project implementation
 - Combining projects
 - Implementation funding

RMC

Meeting Agenda

- Introductions
- Summary of Integrated Regional Water Management Program
- **East Stanislaus Region**
- East Stanislaus IRWM Planning Process
- Governance and Public Involvement
- Next Steps

RMC

An IRWMP Region is...

- Defined by those organizations creating it
- Defined by water management issues and potential solutions
- Not restricted to political boundaries
- Typically within a State Hydrologic Area

The East Stanislaus Region Includes...

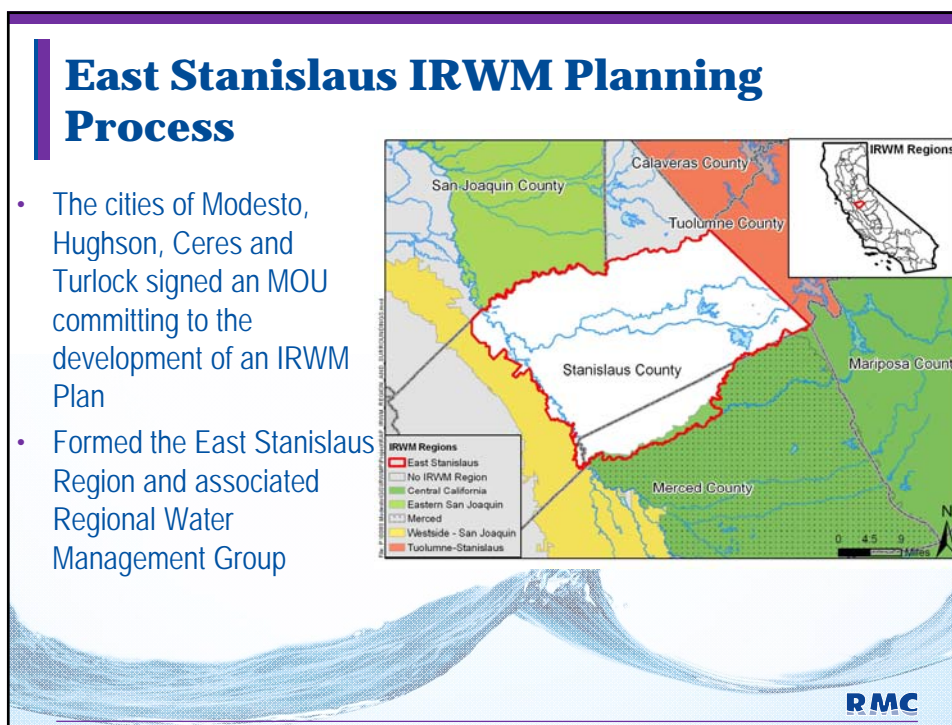
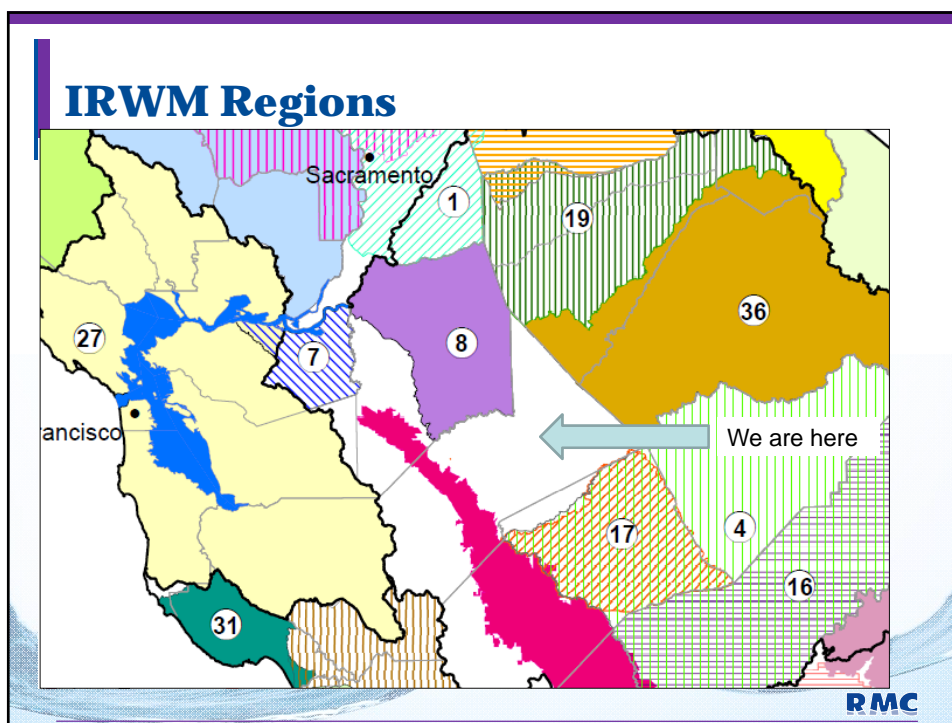
- Portions of Stanislaus and Merced Counties
- Cities of Modesto, Hughson, Turlock, Ceres, Patterson, Newman, Riverbank, Waterford, and Oakdale
- Communities of Keyes, Denair, Del Rio, Riverdale, Grayson, Hickman, Empire, Salida, Hilmar, Delhi, and Keys
- Turlock Irrigation District, Modesto Irrigation District, Eastside Irrigation district, Oakdale Irrigation District, and Merced irrigation District

RMC

IRWM Funding Areas Coincide with State Hydrologic Regions

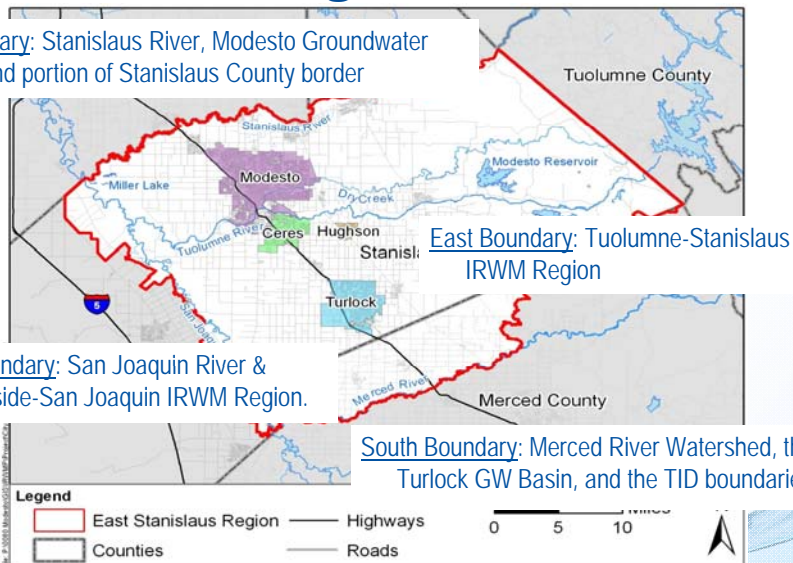


RMC



East Stanislaus Regional Boundaries

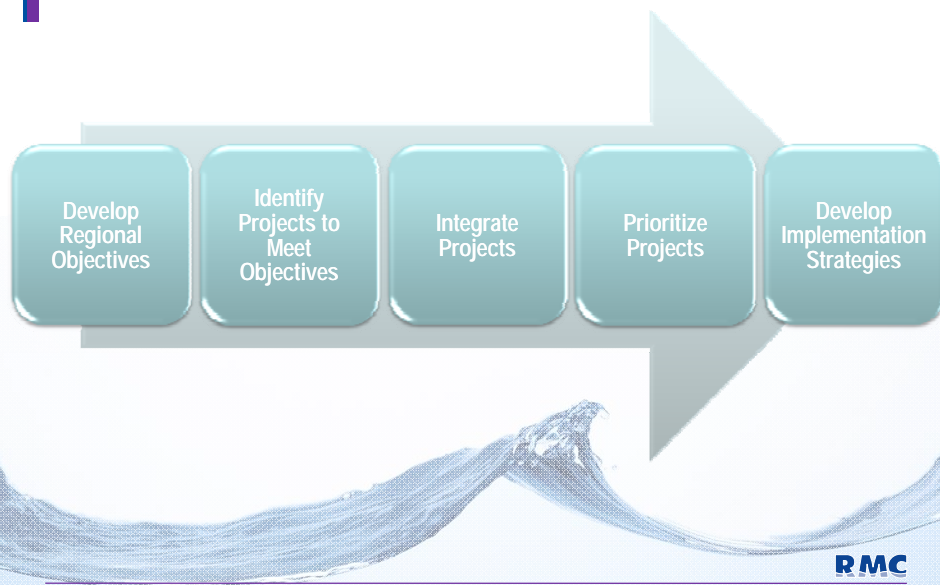
North Boundary: Stanislaus River, Modesto Groundwater Basin, and portion of Stanislaus County border



Meeting Agenda

- Introductions
- Summary of Integrated Regional Water Management Program
- East Stanislaus Region
- East Stanislaus IRWM Planning Process
- Governance and Public Involvement
- Next Steps

IRWM Planning Process



RMC

Key Components of IRWM Planning



Basic Elements of an IRWM Plan Development Process

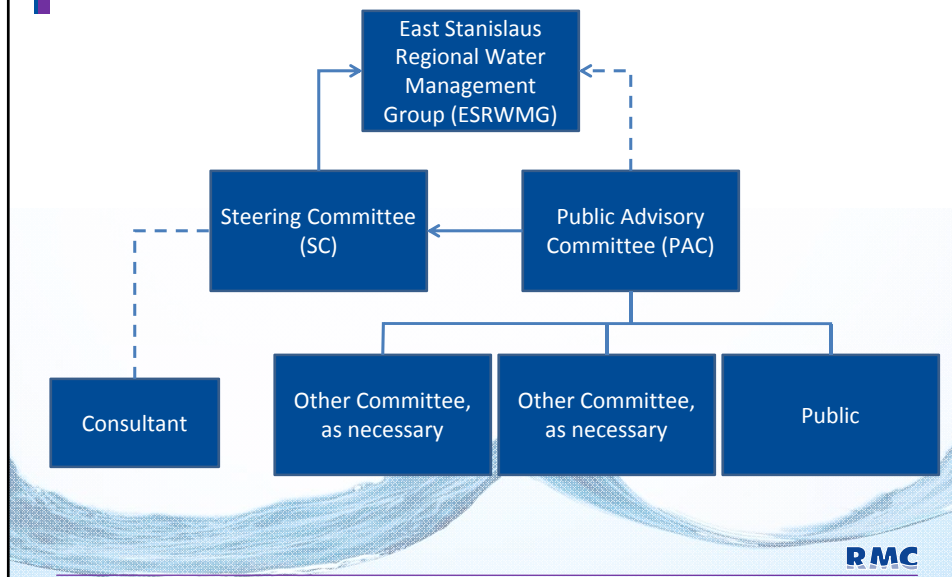
1. Identify stakeholders and region
2. Clarify regional and local needs
3. Develop regional goals, objectives, & priorities
4. Analyze proposed projects
5. Prioritize projects
6. Develop implementation strategies
7. Compile results into IRWM Plan



Meeting Agenda

- Introductions
- Summary of Integrated Regional Water Management Program
- East Stanislaus Region
- East Stanislaus IRWM Planning Process
- **Governance and Public Involvement**
- Next Steps

Regional Water Management Governance Structure



Public Involvement

- Cooperation and coordination among regional stakeholders promotes regionalization
- Input and comments from stakeholders maximizes benefits
- Two levels of public involvement:
 - Attendance at open ESRWMG and Steering Committee meetings
 - Public Advisory Committee (PAC) meetings



You can become a member of the PAC

- [illegible]



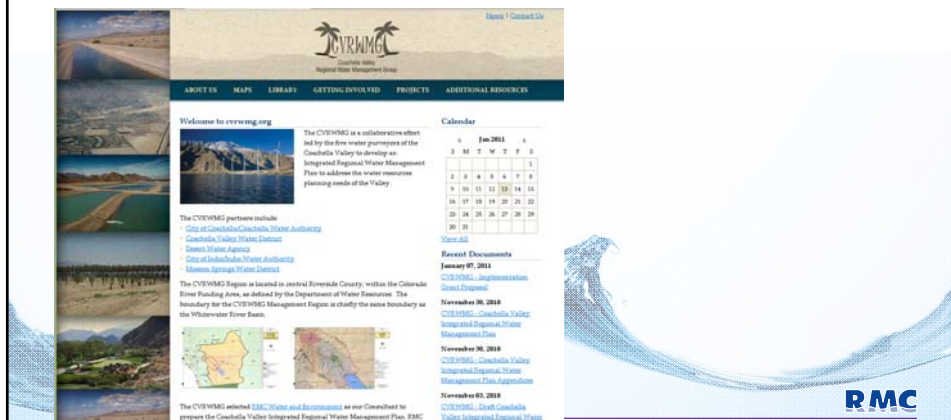
Methods to Provide Input & Obtain Information

-



Methods to Provide Input & Obtain Information

- ESRWMG, Steering Committee, and PAC meetings
- East Stanislaus IRWM planning website (to be developed)



Methods to Provide Input & Obtain Information

- ESRWMG, Steering Committee, and PAC meetings
- East Stanislaus IRWM planning website (to be developed)
- Handouts, newsletters, advertisements



Methods to Provide Input & Obtain Information

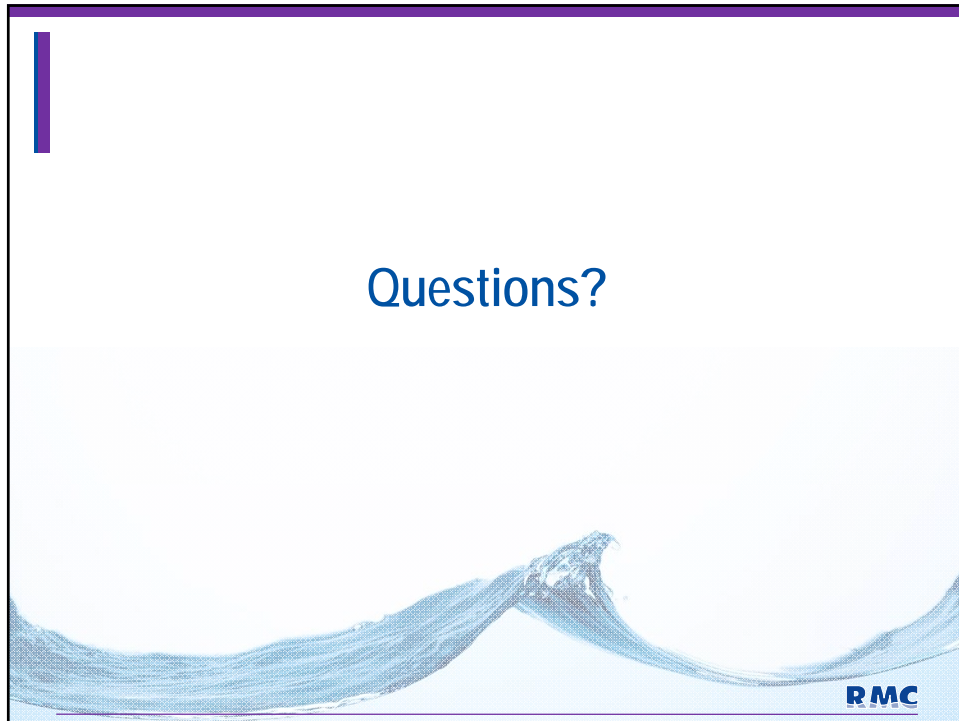
- ESRWMG, Steering Committee, and PAC meetings
- East Stanislaus IRWM planning website (to be developed)
- Handouts, newsletters, advertisements

RMC

Contact Information

Jim Alves
City of Modesto
209-571-5557
jalves@modestogov.com

RMC



What is an Integrated Regional Water Management Plan?

An IRWM Plan is:



- ◆ A planning document
- ◆ A description of water-related resources, challenges, goals, and solutions
- ◆ An opportunity for regional partnerships and coordination

An IRWM Plan is NOT:



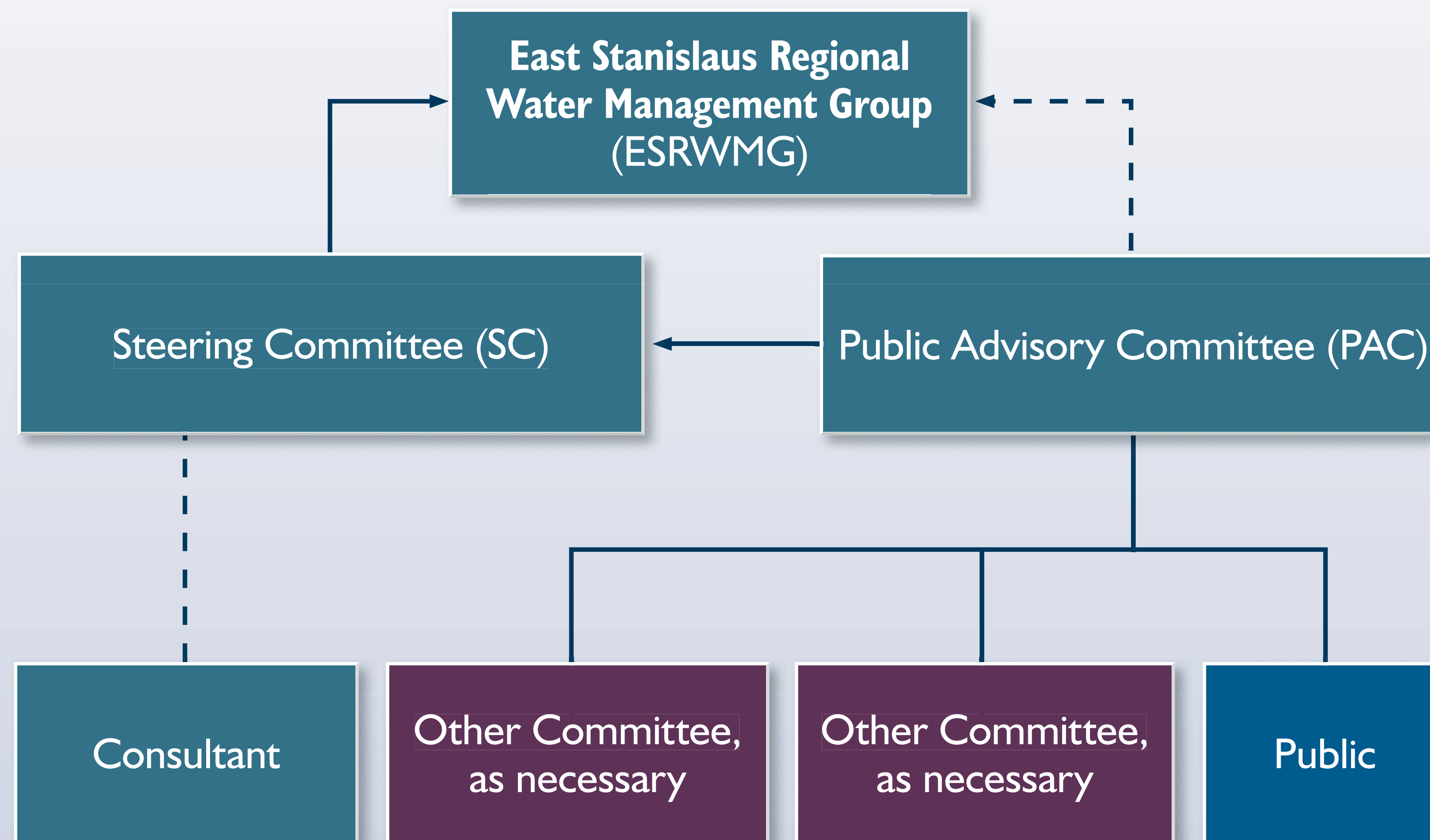
- ◆ Substitute for local planning
- ◆ Decrease in agency responsibilities or autonomy
- ◆ A policy document
- ◆ Comprehensive project documentation

The Purpose of an IRWM Plan is to...

- ◆ Develop an understanding of water resources issues from a regional perspective
- ◆ Identify water resources solutions
- ◆ Reflect the regional needs
- ◆ Maximize benefits through integration of water management strategies
- ◆ Leverage regional resources through partnerships
- ◆ Facilitate funding



Regional Water Management Governance Structure



The ESRWMG...

- ◆ Includes one member from each MOU signatory
- ◆ Members are from Cities of Ceres, Hughson, Modesto and Turlock
- ◆ Acts as the lead voice in the IRWM planning and implementation process
- ◆ Facilitates communication, cooperation and education between member agencies
- ◆ Facilitates implementation of the IRWMP and overall planning process
- ◆ Provides oversight to both the Steering Committee and Public Advisory Committee

The Public Advisory Committee...

- ◆ Is equivalent to a stakeholder committee that provides input and recommendations to the Steering Committee and ESRWMG
- ◆ Helps develop project prioritization methodologies
- ◆ Helps screen and rank projects
- ◆ Contributes to methodology for inclusion of projects in grant applications
- ◆ Receives direction and tasks to complete from the Steering Committee
- ◆ Is made of non-governmental organizations, environmental groups, community organizations, the County, Regional Board, disadvantaged communities and others

The Steering Committee...

- ◆ Leads preparation and implementation of the IRWM Plan and future updates of the Plan.
- ◆ Manages contracts, information / databases, reporting
- ◆ Manages the IRWM Plan development and implementation
- ◆ Coordinates with the Public Advisory Committee
- ◆ Presents unresolved issues/work tasks to the Public Advisory Committee
- ◆ Manages the East Stanislaus IRWMP website
- ◆ Coordinates distribution and posting of materials
- ◆ Conveys Public Advisory Committee's recommendations to the ESRWMG



Frequently Asked Questions

How is IRWM different than what came before?

In general, IRWM involves looking at water management issues from a multitude of perspectives as diverse stakeholders engage one another. That process can yield multi-benefit projects that meet several entities’ goals and objectives in a more cost effective manner than each entity acting on its own. Previously, water management entities tended to work with a narrow focus on their service area and primary function, sometimes competing against similar efforts to resolve similar issues or advancing duplicative efforts.

Why is IRWM important to me? Why should I participate?

IRWM operates on the principle that each stakeholder holds a piece of the water management solution for their region and that the best solutions require better communication and understanding of regional issues than has previously occurred. The more partners involved in an IRWM, the higher the potential for better water management solutions.

In addition to the IRWM grant, are there other sources to fund a project?

Yes, while recent State bond funding measures have provided a large amount of grant funding specifically for IRWM plans and implementation, there are other opportunities for projects. Various state grant and loan programs, administered by DWR and other state agencies, can provide funding, including: FloodSAFE, urban streams, local groundwater assistance, stormwater quality, rivers and parkways, and state revolving fund loans. Federal funding may also be available for some types of projects. Local financing will make up the largest portion of funding in many regions. The IRWM plan should serve as a strategic investment plan for all sources of funding.



What’s the current state of IRWM planning?

IRWM planning regions now cover approximately 82% of the area of the State, an increase of 28% in five years. Planning regions include approximately 98% of the population in California, an increase of 4% in five years. IRWM planning regions vary in size. Some cover an entire hydrologic region of the State. In other hydrologic regions there are multiple IRWM planning regions. The largest IRWM planning region is approximately 12.5 M acres and the smallest about 170,000 acres. The enclosed map presents the current IRWM planning regions in the State.

What is the relationship between local planning and IRWM planning?

Local planning is important and will continue as not all water resource management issues are regional in nature. In fact, sound local planning helps generate regional issues and objectives that can benefit from integrated solutions.

What do people involved in IRWM planning regions say?

- Opinions about IRWM vary, but there is broad agreement on some of the factors that lead to successful implementation of the IRWM.
- ◆ IRWM efforts are long term.
 - ◆ IRWM efforts yield unprecedented coordination and cooperation.
 - ◆ One of the most valuable outcomes of IRWM efforts are the relationships formed between diverse stakeholders.

How does someone get involved?

DWR’s web site contains contact information for current IRWM efforts (see resources section). If an IRWM effort does not currently exist in your area, you can begin to identify other water management entities in your area to begin the conversation or you can contact one of DWR’s regional contacts to begin to connect to others in your area. ☞

Benefits of IRWM

As indicated in the CWP Update 2009, IRWM is a key initiative to ensuring reliable water supplies in the future. IRWM helps communities and regions incorporate sustainable actions into their water management efforts.

A main focus of IRWM planning is diversification of a region’s water portfolio so that multiple resource management strategies are employed in meeting future water and water quality needs of all sectors. This diversification should help regions to better prepare to face an uncertain future of water availability and water use; while protecting and improving water quality and the environment.

As a key initiative in the CWP, IRWM is a long term approach to water management in California. As IRWM evolves, DWR seeks to encourage planning efforts that are collaborative and use broad stakeholder participation to gain the input that leads to diversity of water management strategies. Such planning efforts can live well into the future beyond current state funding incentives. ☞



Contacts

For more information on Integrated Regional Water Management, please contact us at:
DWR_IRWM@water.ca.gov



What is IRWM?

Integrated Regional Water Management (IRWM) is a collaborative effort to manage all aspects of water resources in a region. IRWM differs from traditional approaches to water resource management by integrating all facets of water supply, water quality, waste water treatment, and flood and storm water management.

IRWM crosses jurisdictional, watershed, and political boundaries; involves multiple agencies, stakeholders, individuals, and groups; and attempts to address the issues and differing perspectives

of all the entities involved through mutually beneficial solutions.

IRWM is an example of integrated resource planning, which began in the late 1980s in the electric power industry as a comprehensive approach to resource management and planning. When applied to water management, integrated resource planning is a systems approach that explores the cause-and-effect relationships between different aspects of water resource management, with an understanding that changes in the management of one aspect of water resources

can affect others. Because water resources are often not confined to the boundaries of a single water management agency, a consensus-based, cross-jurisdictional, regional approach provides an opportunity to formulate comprehensive solutions to water resource issues within a region.

The methods used in the IRWM include a range of water resource management strategies, which relate to water supply, water quality, water use efficiency, operational flexibility, and stewardship of land and natural resources. ☞

Background

Although IRWM planning has roots in integrated resource planning, recent developments have caused a surge in IRWM activity in California.

The Integrated Regional Water Management Act of 2002 (Senate Bill 1672, Costa) amended the California Water Code (CWC) to add §10530 to encourage local agencies to work cooperatively to manage local and imported water supplies to improve the quality, quantity, and reliability of those supplies. While this act provided the authority for IRWM plans, it gave little guidance or incentive for IRWM planning or implementation.

In November 2002, California voters passed Proposition 50, the Water Security, Clean Drinking Water, Coastal and Beach Protection Act of 2002, which provided \$500,000,000 (CWC §79560-79565) to fund competitive grants for projects consistent with an adopted IRWM plan. The grant program was run as a joint effort between the Department of Water Resources (DWR) and the State Water Resources Control Board to provide both planning and implementation grants to IRWM efforts.

The incentive provided by this funding, as well as the direction provided in grant program guidelines, were major drivers for progress in IRWM over the last several years.

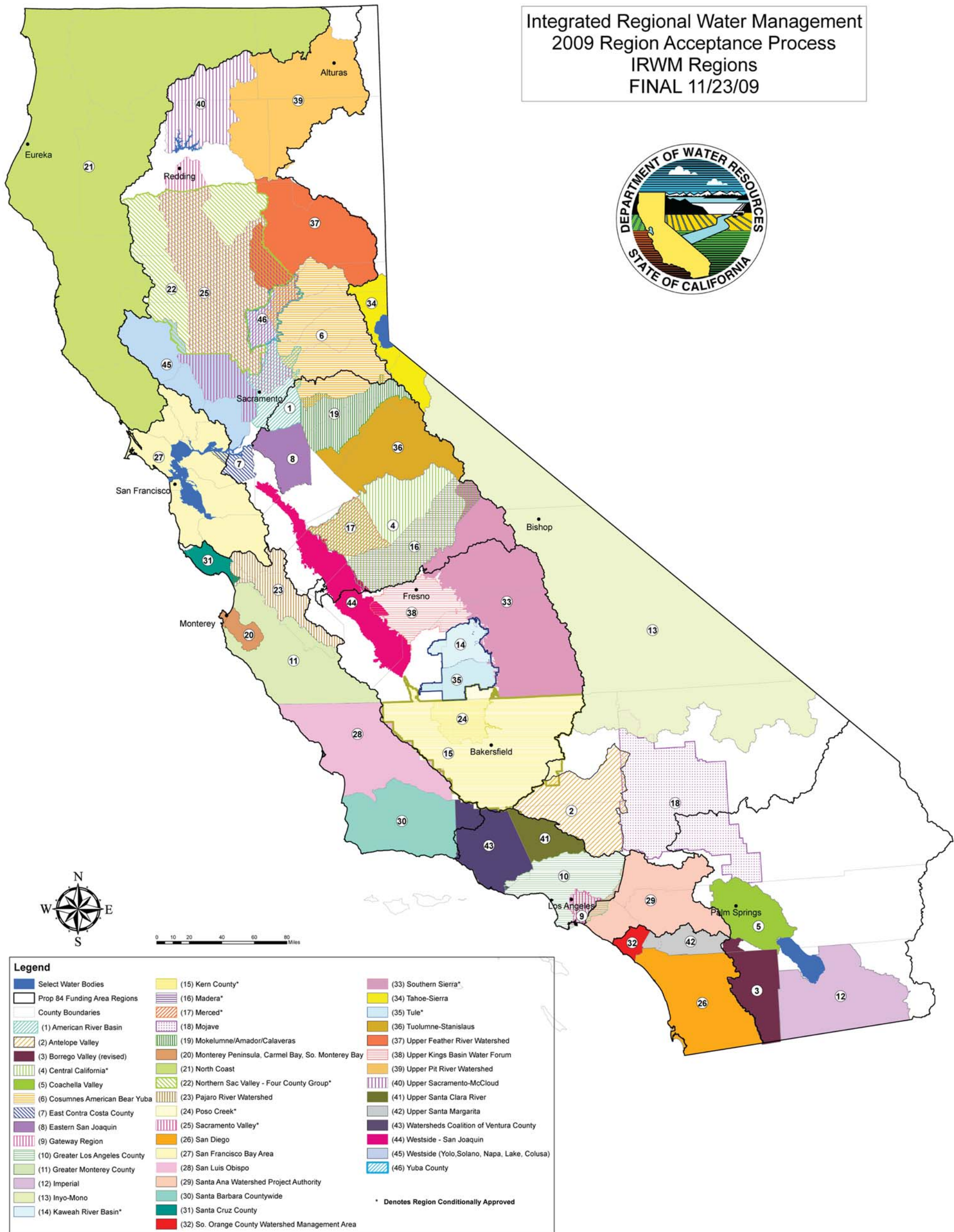
In December 2005, DWR released the California Water Plan (CWP) Update, 2005, which names the IRWM as a key initiative to ensure reliable water supplies.

In November 2006, California voters passed Proposition 84, the Safe Drinking Water, Water Quality, and Supply, Flood Control, River and Coastal Protection Bond Act of 2006. Proposition 84 provides \$1,000,000,000 for IRWM planning and implementation. At the same time, California voters also passed Proposition 1E, the Disaster Preparedness and Flood Prevention Bond Act of 2006, which provides, among other actions, \$300,000,000 for storm water projects that reduce flood damage and are consistent with an IRWM plan.

In October 2009, DWR released the CWP Pre-Final Draft, Update 2009, which emphasizes the need for integrated regional water management. As stated in the Highlights volume, “IRWM provides a critical framework for actions to address the uncertainties presented by climate change as well as other risks to California’s water future.” The first objective in the implementation chapter (Volume 1, Chapter 7) is to promote, improve, and expand integrated regional water management. ☞



Integrated Regional Water Management
2009 Region Acceptance Process
IRWM Regions
FINAL 11/23/09



Notes:
1) Hatch and Dot symbols are shown where there is a boundary overlap
2) Numbers shown are for reference purposes only and correspond to internal DWR RAP submittal identifications.
3) Region boundaries shown are those proposed by each applicant as submitted to DWR for the 2009 RAP on April 29, 2009, or as revised and submitted to DWR following the 2009 RAP interview (as of October 22, 2009.)

Resources

California Water Plan and Updates: <http://www.waterplan.water.ca.gov/>

IRWM Grant Program: <http://www.water.ca.gov/irwm/>

FloodSAFE: <http://www.floodsafe.water.ca.gov/>

Other DWR Grant programs: <http://www.water.ca.gov/nav/nav.cfm?loc=t&id=103>

State Water Board Financial Assistance: http://www.waterboards.ca.gov/water_issues/programs/grants_loans

Region Acceptance Process

In 2009, DWR went through a Region Acceptance Process (RAP) to accept regions into the IRWM Grant Program. Forty six regions submitted applications, and after a thorough review and interview process, DWR approved 36 regions, and conditionally approved 10 other regions. The map above shows those regions that have been approved or conditionally approved by DWR. The DWR IRWM web site contains more specific information on the RAP. ☞

SIGN-UP SHEET FOR EMAIL AND NEWSLETTER UPDATES

NAME	AGENCY	PHONE NUMBER	EMAIL ADDRESS	ADDRESS
Michael Brinton	Ceres	538-5630	ci.ceres.ca.us michael.brinton@ceres.ca.us	
Alex Cantatore	Turlock Journal	634-9141	acantatore@turlockjournal.com	138 S. Center St. Turlock, CA 95380
Thom Clark	City of Hughson	883-0811	telarck@hughson.org	
Debbie Liebersbad	Turlock ID	883-8428	dcliebersbad@tid.org	P.O. Box 949 Turlock, CA. 95381
Carrie Cardoza	Cardoza + Assoc.	581-2274	carrie@cardoza.com	2020 Skindiford Ave #11-3 Mod CA 95350

IRWMP WORKSHOP SIGN-IN SHEET

	NAME	AGENCY	ADDRESS	PHONE #	EMAIL ADDRESS
1	Camie Cardoza	Cardoza	302 Tree Crest Cir. Oak. CA 95301	581-2274	camie@opcardoza.com
2	Jack Doo	"	P.O. Box 822, Denair 95316	648-4287	jpdoojr@shcglobal.net
3	Keslie Dundas	RMC	2001 N. Main, Walnut Creek	925-627-4100	kdundas@rmcwater.com
4	Jim	Modesto	Modesto City Hall	209-571-5557	jakes@modestogov.com
5	GLENN PRASAD	CITY MODESTO	—	209 571 5149	gprasad@modestogov.com
6	DAVID A. FELIX	"	"	(209) 577-5488	DFELIX@MODESTOGOV.COM
7	Rich Ulla	"	"	577-5215	ulla@modestogas.com
8	DAN MADSEN	C.D.T.	156 S. BROADWAY	209 668-5890	
9	Alex Cantatore	Turlock Jamb	138 S. Center St. Turlock	209 634 9141	acantatore@turlockjournal.com
10	Dave Richardson	RMC	2001 N. Main St. Walnut Creek	(925) 627-4100	d Richardson@rmcwater.com
11	Dobbi Lieberski	TID	PO Box 949, Turlock, CA.	(209) 883-8428	dclieberski@tid.org
12	Thom Clark	Hughson		883-0811	tclark@hughson.org
13	Sheila Cumberland	Ceres	2720 Second St Ceres	538-5764	Sheila.Cumberland@ci.ceres.ca.us
14					
15					
16					
17					
18					
19					
20					
21					
22					
23					

Public Workshop – April 12, 2012

You're invited to a community workshop...

Help us prepare the East Stanislaus Integrated Regional Water Management Plan! Submit projects for inclusion in the Plan!

Working together to manage surface and groundwater resources

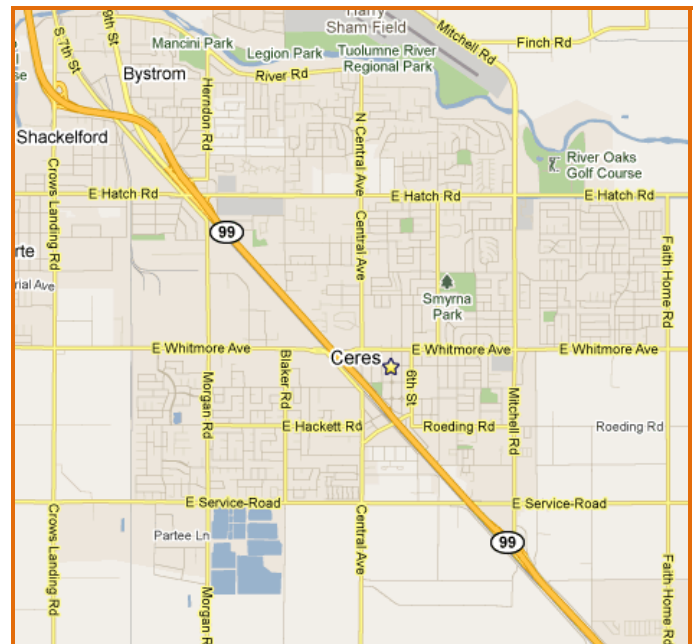


- Learn about Integrated Regional Water Management Planning;
- Hear a presentation on the process for preparing the Plan;
- Discover how to submit water resource projects for inclusion in the Plan;
- Learn how you can participate.

Snacks and Beverages will be provided!

WHEN: Thursday, April 12th – 6 p.m.

WHERE: Ceres Community Center
2701 4th Street, Ceres



For more information on the workshop, contact:

Jim Alves
Associate Civil Engineer
City of Modesto
(209) 571-5557 or jalves@modestogov.com

This meeting is sponsored by:



**East Stanislaus Regional Water
Management Partnership**

Uste esta invitado a un taller para la comunidad ...

Ayudenos a preparar el plan de Administración Integral del agua regional del este del condado de Stanislaus! Somete proyectos para la inclusión en el Plan!

Trabajemos juntos para administrar los recursos locales del agua de superficie y agua subterránea

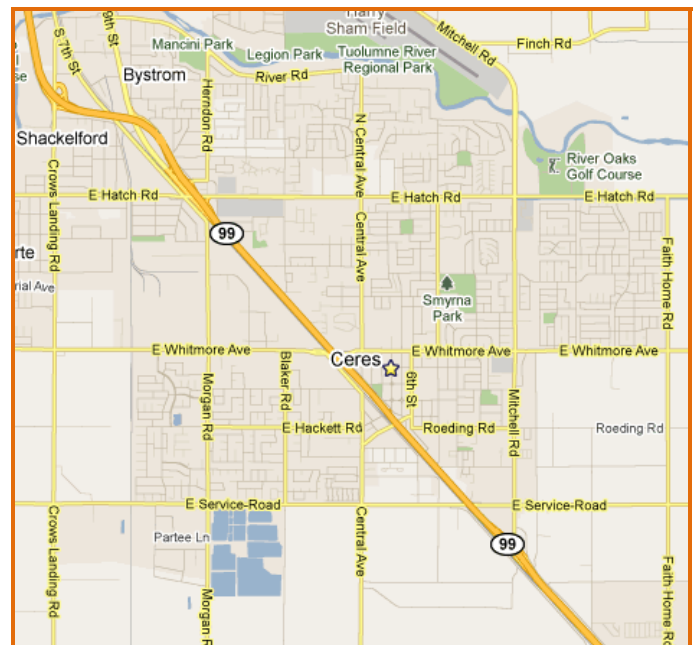


- Aprenda lo relacionado con el planeamiento de la administración integral del agua regional;
- Escucharemos una presentación acerca del proceso de la preparación del plan;
- Descubra cómo someter proyectos de recursos de agua para su inclusión en el Plan;
- Aprenda cómo usted puede participar.

Habrá refrescos y antojitos!

FECHA: El jueves 12 de abril del 2012 a las 6 de la tarde

LUGAR: El centro de la comunidad de la ciudad de Ceres. 2701 4th Street, Ceres



Esta junta es patrocinada por:



(Por sus siglas en inglés)
**East Stanislaus Regional Water
Management Partnership**

Para más información sobre el taller favor de ponerse en contacto con:

Jim Alves

Ingeniero Civil Asociado
de la ciudad de Modesto
tel. (209) 571-5557 or correo electronic
jalves@modestogov.com

**NOTICE OF PUBLIC MEETING
CITIES OF MODESTO, TURLOCK, CERES, HUGHSON**

**PUBLIC MEETING FOR PROJECT SOLICITATION FOR THE EAST STANISLAUS
INTEGRATED REGIONAL WATER MANAGEMENT (IRWM) PLAN. THE MEETING WILL
DISCUSS THE DEVELOPMENT OF AN IRWM PLAN FOR INTEGRATING WATER
PROJECTS AND WATER RESOURCE MANAGEMENT AND PROJECT SUBMITTAL FOR
INCLUSION IN THAT PLAN.**

NOTICE IS HEREBY GIVEN that a public meeting will be held by the Cities of Modesto, Turlock, Ceres and Hughson on behalf of the East Stanislaus Regional Water Management Partnership at 6:00 PM on April 12, 2012, at the Ceres Community Center, 2701 Fourth St., Ceres, California, for the purpose of notifying and informing the public on the upcoming project solicitation period for submittal of projects for inclusion in the East Stanislaus Integrated Regional Water Management Plan.

All interested persons are invited to attend the public meeting at the above time and place to learn about and participate in the preparation of the East Stanislaus Integrated Regional Water Management Plan (IRWMP) and contribution of projects and/or programs that will meet the goals and objectives of the East Stanislaus Region. This meeting is an opportunity for residents to learn about the State's IRWM Program and the upcoming work to be done to prepare the plan to address immediate and long-term water and wastewater needs by both local residents and the environment, and about the process that will be used for submitting projects for inclusion in the East Stanislaus IRWMP

If you have any questions, please call Jim Alves in the Capital Planning Group of the Utility Planning and Projects Department, City of Modesto at (209) 571-5557 or (TDD) 526-9211, any weekday from 8:30 a.m. to 5:30 p.m.




East Stanislaus Integrated Regional Water Management Plan

Presenters:
 Leslie Dumas – RMC Water and Environment
 Jim Alves – City of Modesto


April 12, 2012

Meeting Agenda


- Introductions
- Summary of Integrated Regional Water Management Program
- East Stanislaus Region and Planning Process
- Project Solicitation Process



Introductions – Meet the ESRWMP



- City of Modesto
- City of Hughson
- City of Ceres
- City of Turlock



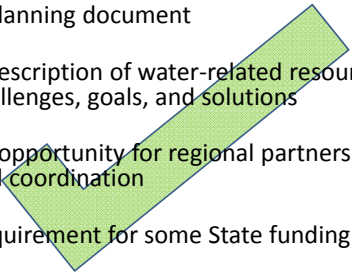

Meeting Agenda

- Introductions
- **Summary of Integrated Regional Water Management Program**
- East Stanislaus Region and Planning Process
- Project Solicitation Process



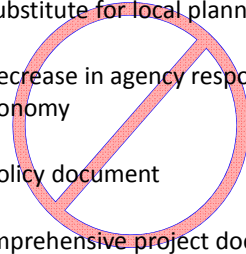

An Integrated Regional Water Management (IRWM) Plan is...

- A planning document
- A description of water-related resources, challenges, goals, and solutions
- An opportunity for regional partnerships and coordination
- Requirement for some State funding

An IRWM Plan is not...

- A substitute for local planning
- A decrease in agency responsibilities or autonomy
- A policy document
- Comprehensive project documentation

The Purpose of an IRWM Plan is to...

- Develop regional understanding
- Identify water resources solutions
- Reflect the regional needs
- Maximize benefits through integration of water management strategies
- Leverage regional resources through partnerships
- Be eligible for State funding through the IRWM grant program



Contributors Include...

- Water and Wastewater Agencies
- Counties
- Cities
- Public Groups
- Private Organizations
- Members of the Public



An IRWM Plan and Process Helps by...

- Consolidating information
- Encouraging discussion among stakeholders
- Evaluating projects on a regional scale
- Increasing chances of project implementation
 - Combining projects to maximize benefits and reduce cost
 - Implementation funding



Meeting Agenda

- Introductions
- Summary of Integrated Regional Water Management Program
- **East Stanislaus Region and Planning Process**
- Project Solicitation Process

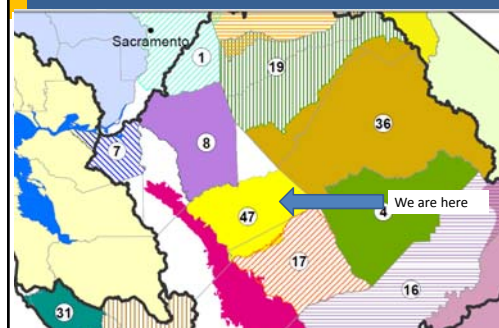


The East Stanislaus Region Includes...

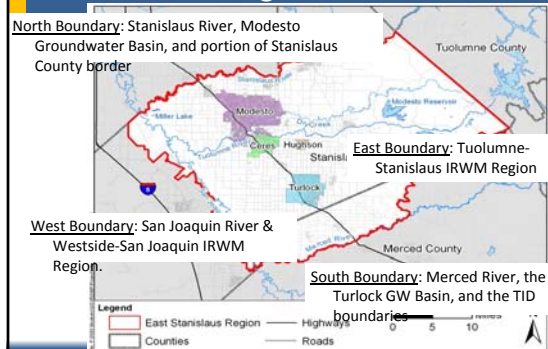
- Portions of Stanislaus and Merced Counties
- Cities of Modesto, Hughson, Turlock, Ceres, Patterson, Newman, Riverbank, Waterford, and Oakdale
- Communities of Keyes, Denair, Del Rio, Riverdale, Grayson, Hickman, Empire, Salida, Hilmar, Delhi, and Keys
- Turlock Irrigation District, Modesto Irrigation District, Eastside Irrigation District, Oakdale Irrigation District, and Merced Irrigation District



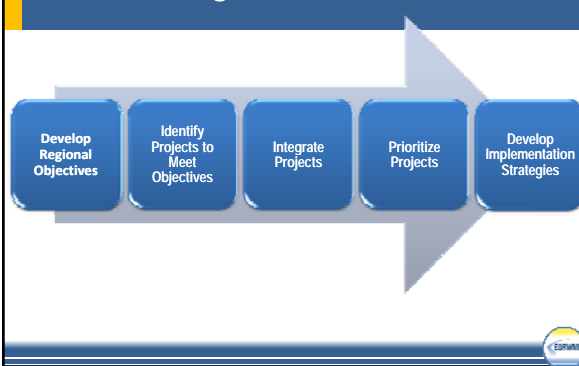
IRWM Regions



East Stanislaus Regional Boundaries



IRWM Planning Process



Identified Issues and Conflicts

- Water supply reliability
- Drinking water quality
- Water quality protection
- Groundwater overdraft / contamination / recharge
- Protection and enhancement of aquatic, riparian, and watershed resources
- Water-related needs of disadvantaged communities
- Flood protection
- Recycled water use
- Water conservation
- Aging infrastructure

Identified Regional Goals

- Water Supply
- Flood Protection
- Water Quality
- Environmental Protection and Enhancement
- Regional Communication and Cooperation
- Economic and Social Responsibility

Water Supply Goal

To protect existing water supplies and water rights, and improve regional water supply reliability.

Flood Protection Goal

To ensure flood protection strategies are developed and implemented through a collaborative process, utilizing both local and watershed-wide approaches designed to maximize opportunities for comprehensive water resource management.

Water Quality Goal

To protect and improve water quality for beneficial uses consistent with regional interests and the RWQCB Basin Plan in cooperation with local, state and federal agencies, and regional stakeholders.



Environmental Protection and Enhancement Goal

To protect the environmental resources of the Stanislaus, Tuolumne, Merced and San Joaquin River watersheds by identifying, promoting and implementing opportunities to assess, restore and enhance natural resources of these watersheds



Regional Communication and Cooperation Goal

To implement and promote this IRWM Plan through regional communication, cooperation, and education.

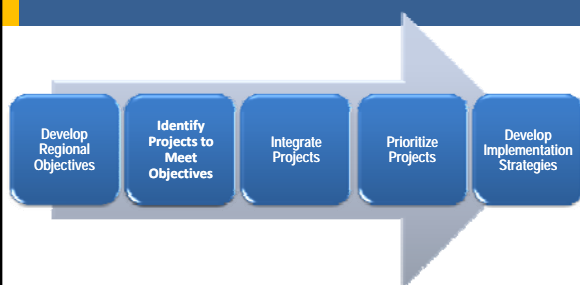


Economic and Social Responsibility Goals

To promote development and implementation of projects, programs and policies that are socially impartial and economically sound.



IRWM Planning Process



Meeting Agenda

- Introductions
- Summary of Integrated Regional Water Management Program
- East Stanislaus Region
- East Stanislaus IRWM Planning Process
- **Project Solicitation Process**



Project Solicitation Process

- The East Stanislaus IRWMP must contain a list of projects that contribute to meeting the Plan Goals and Objectives
- Projects are submitted by agencies, cities, and other stakeholders through an open and public project solicitation process
- Submit projects between 4/2/12 and 5/7/12



How to Submit a Project – Two ways

1. Go to the East Stanislaus IRWM website (www.eaststanirwm.org) and click on the Projects tab or use this link: <http://irwm.rmcwater.com/es/login.php>

OR

2. Fill out hard copy form and send it to Jim Alves at the City of Modesto. The form is available upon request from Jim Alves



Project Solicitation Form

The image shows a multi-page project solicitation form. The first page is the 'East Stanislaus IRWMP Project Information Form' with sections for Project Name, Location, Agency, and Project Description. The second page is the 'East Stanislaus IRWMP Project Information Form' with sections for Project Funding, Project Benefits, and Project Implementation. The third page is the 'East Stanislaus IRWMP Project Information Form' with sections for Project Funding, Project Benefits, and Project Implementation. The fourth page is the 'East Stanislaus IRWMP Project Information Form' with sections for Project Funding, Project Benefits, and Project Implementation.



Methods to Provide Input & Obtain Information

- ESRWMP, Steering Committee, and PAC meetings



Methods to Provide Input & Obtain Information

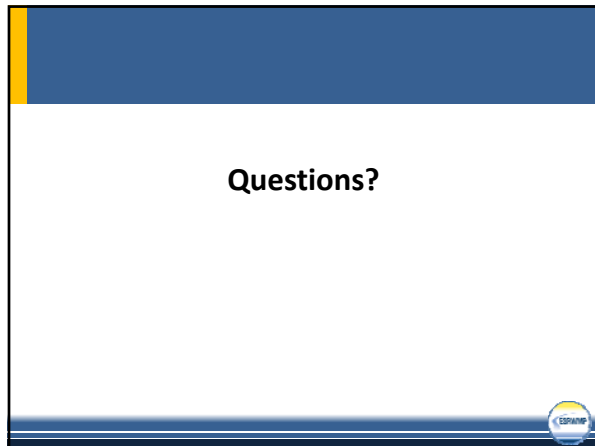
- ESRWMP, Steering Committee, and PAC meetings
- East Stanislaus IRWM website – www.eaststanirwm.org



Contact Information

Jim Alves
City of Modesto
209-571-5557
jalves@modestogov.com





4/12/12

IRWMP WORKSHOP SIGN-IN SHEET

	NAME	AGENCY	MAILING ADDRESS	PHONE #	EMAIL ADDRESS
1	Jeremy Dumas	City of Ceres		538-5717	
2	Michael Brinton	Ceres			
3	Jack Doo	Cardozat Assoc		648-4287	
4	Jim Alves	Modesto			jvalves@modestocal.com
5	Patrick Koopke	Tuolumne River Trust	829 13 th St, Modesto 95354	588-8636	patrick@tuolumne.org
6	Joe Marcotte	Eastside Water District		491-0371	jbm@jbm.com
7	HENRY BENAVIAS	KCSD		668 8341	
8	Mike Willett	Patterson		895-8065	mwillett@ci.patterson.ca.us
9	Debbie Lieberschul	Turlock ID		209-883-8428	dclieberschul@tid.org
10	Leslie Dumas	RMC			ldumas@rmcwater.com
11	LEE FREMMLING	FPP&P	2816 PARK AVE, MERCED 95350	209 723-2040	lfremming@fppeng.com
12	Thom Clark	Hughson			
13					
14					
15					
16					
17					
18					
19					
20					
21					
22					
23					



Meeting Minutes

East Stanislaus Integrated Regional Water Management Plan

Subject: Public Workshop

Prepared By: Leslie Dumas/RMC

Date/Time: April 12, 2012 / 6:00 p.m.

Location: Ceres Community Center
Ceres, CA

Attendees: Jeremy Damas, Mike Brinton (City of Ceres); Jim Alves (City of Modesto); Leslie Dumas, (RMC); Patrick Koepele (Tuolumne River Trust); Joe Marcotte (Eastside Water District); Henry Benavidews(Keyes CSD); Mike Willett (City of Patterson); Debbie Liebersbach (Turlock Irrigation District); Lee Fremming (Fremming Parson and Pecchenino); Thom Clark City of Hughson); Jack Doo/Cardoza & Associates

Project Number: 0080-009

1. Purpose of Meeting

- Provide update on IRWMP development status
- Introduce project solicitation form and website
- Kick-off project solicitation period
- Discuss planning grant application

2. Discussion Summary

- Jim Alves opened the meeting at 6:09 p.m. He introduced himself and asked the group to introduce themselves. Alves gave a summary of the Integrated Regional Water Management Program, the East Stanislaus Region and planning process and the project solicitation process. Alves then facilitated a slide show that was included in the handouts.
- The group of attendees, which included representatives from groups attending for the first time, was invited by Alves to partner with the East Stanislaus IRWM in applying for grant funds. "If you've got water issues, this is the place to be," said Alves.
- Groups he was directly seeking participation from included irrigation districts, environmental groups, counties and disadvantaged communities.
- The following are some questions Alves answered:
 - Patrick Koepele asked why the triangle piece of property directly north of the East Stanislaus Region was not included. Alves said it was not believed to be part of the watershed and so it was not a good fit. He also mentioned the area is sparsely populated and did not share the same water source/concerns as the rest of the region.
 - Debbie Liebersbach asked why the Merced side of the region did not follow the river. Alves replied that the overlap was a result of the ESIRWM region following the Turlock Irrigation District (TID) service area boundary at that location. He noted that the Merced IRWM Region did not have an issue with the two Regions overlapping and that the two regions have agreed to work together on water issues in this overlapping area. Leslie Dumas also pointed out other overlaps that existing between IRWM regions in the State and noted they were not unusual.

- Patrick Koepele asked who makes decisions for the Region. Alves said the Region is a partnership of the four cities: Modesto, Turlock, Ceres and Hughson, and that members from these four regions form the East Stanislaus Regional Water Management Partnership (ESRWMP). Under the ESRWMP are several committees, including the Steering Committee (SC) and Public Advisory Committee (PAC). These committees are where the work is being done. As far as the Steering Committee and the Public Advisory Committee, he said it was best to be on both committees if possible.
- Alves handed the presentation off to Leslie Dumas at 6:38 p.m. She discussed the IRWM planning process and identified issues and conflicts. Dumas also identified the Regional goals, which included goals for:
 - Water supply
 - Flood protection
 - Water Quality
 - Environmental Protection and Enhancement
 - Regional Communication and Cooperation, and
 - Economic and Social Responsibility.She noted projects to be submitted for inclusion in the IRWMP need to address and support at least one of the goals.
- Dumas then also asked for participants to consider and submit projects for inclusion in the IRWM Plan. “We’re here today to identify projects to meet goals. Give me your projects.”
- While a project can be submitted in hard-copy form, Dumas said it was preferred that projects be submitted through the East Stanislaus IRWM website – www.eaststanirwm.org -- as the project will automatically be entered into the organization’s database.
- Dumas also said the ES IRWM region and DWR are looking for projects which touch multiple goals: “double bang for the bucks,” and projects which benefit disadvantaged communities.
- Alves offered to help in completing the application. “Give us a call and we can walk you through it,” he said.
- Joe Marcotte asked, “Help me understand the role of this group? Must we go through this group.” Dumas described further how the IRWM program operates and their overall directive, and noted that if you want funding through the IRWM program, your project must in an IRWM Plan. But being in the IRWM Plan does not preclude you from seeking funding elsewhere.
- Alves stressed the importance of benefiting disadvantage communities. Dumas added, if you have a project that enhances a DAC, that puts you to the top of the list in the grant funding arena.
- Patrick Koepele asked who decides what projects are in the plan. Dumas noted that all projects submitted will be in the IRWM Plan, provided they meet the minimum requirements, but that only the strongest projects would be included in grant applications. The scoring system for prioritizing the projects was explained and it was noted that a mix of key factors, including an environmental element and flood protection, were important to a high score. The goal of compiling the grant applications is to put together a package that will score the highest. The right mix was needed to maximize the points.

- It was asked if the Region had a good chance to get Planning Grant funds. Dumas said there was approximately \$13 million in requests, with \$9 million to be funded, so the Region's chances were good.
- The meeting was concluded at 7:45 p.m.

Public Workshop – September 11, 2013
